



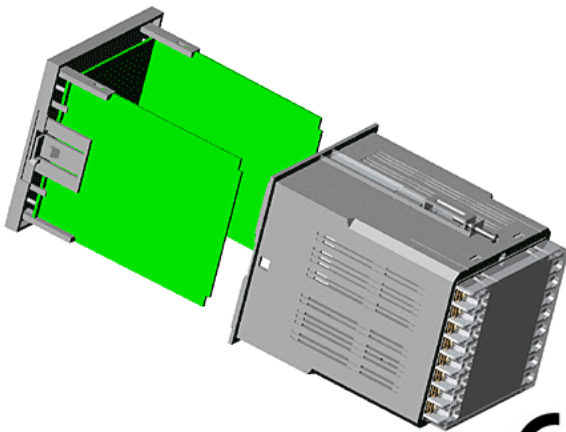
DIN Panel Instrument Cases

1/4 DIN 96 x 96 x 110 mm

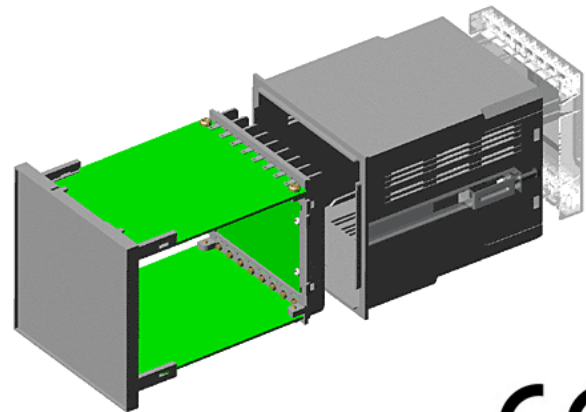
Futura Case

FUTURA case offers technically superior and attractive packaging to enhance value of your products and to build or maintain your competitive edge in the local / world market. Case manufactured in accordance with DIN 43 700 have a large variety of applications in panel flush mounting analog and digital instruments especially suitable for measuring and control technology. Designed for easy installation, the case facilitates extremely rational equipment assembly with optimal utilization of space.

Plug-In Module



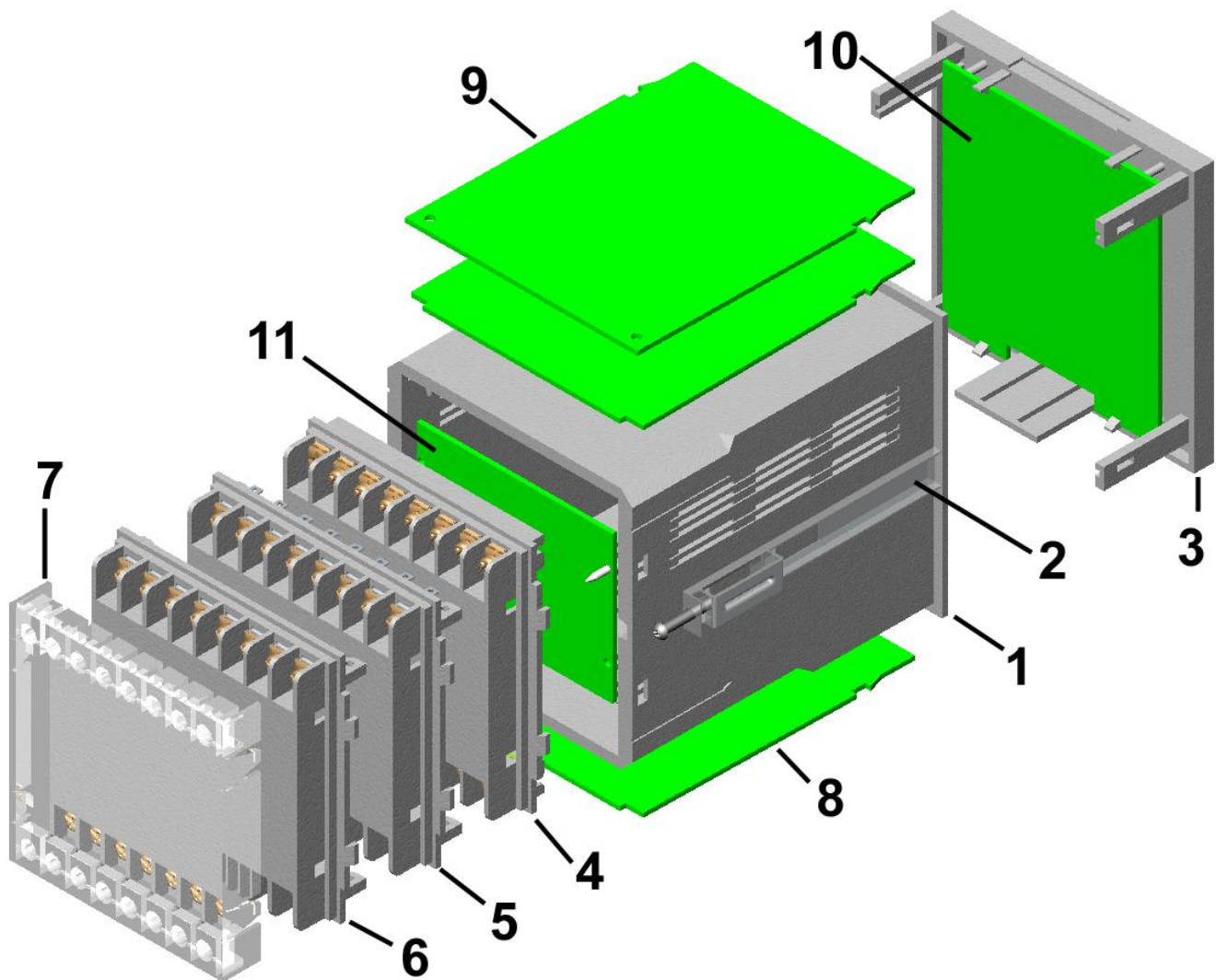
Surface Mount / Wire Jumper Module



Features

- Case size 96x96x110 mm
- Dimensional size per DIN 43 700 - Panel flush mounting.
- Panel Mounting -- Case inserted into the cutout of the control panel from front and fastening clamps are fixed from rear.
- Front loading cassette offers electronic mounting facility.
- Snap-together design speeds up assembly.
- Accommodates Four PCBs, Two lengthwise boards, one display PCB behind the front cover, one small PCB inside back plate.
- PCB guides used as guide element for assembly and lengthwise PCB and Snap-On latches for display PCB.
- 16 (8 + 8) Terminals has pressure plate captive to screws.
- Terminal-To-board Connection Options, Three version
- Plug-In version, has leaf spring contact like card edge connectors, offers quick connections, deal whenever replacement are important to reduce downtime
- Surface Mount version - solder tabs are soldered on PCB surface directly which eliminates wiring, cost effective for higher volumes.
- Wire jumper version - solder tabs and PCB are joined by wire jumper
- Optionally terminal can be custom-loaded on selected position for application configuration and to reduce cost as rest are filled using dummy terminal plugs.
- IP20 (finger protected) Protection against accidental contact, transparent terminal cover snap fits on Back Plate provides protection
- Complete assembly of the electronic module before being installed into the case
- Easy assembly and disassembly for servicing
- Ventilation -- Case has ventilation slots for effective heat dissipation.
- Structured surface -- Case surface with erosion structure in attractive design.
- Customization : Cutout / holes in front plate possible

Case Parts



1. Case
2. Clamp
3. Front plate
4. Back plate - plug-In version
5. Back Plate - surface mount version
6. Back Plate - Wire jumper version
7. Terminal cover
8. Horizontal PCB for Plug-In version
9. Horizontal PCB for surface mount / Wire jumper version
10. Display PCB
11. Back PCB

Material & Color :

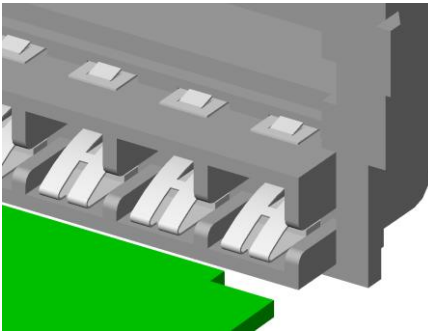
Case, Front plates & Back plates

- ABS - colors White, Black & Dark Gray
- POLYCARBONATE – Fire Retardant UL 94V-0 at 1mm (LEXAN-943) - Color White

Terminal-to-board connection options

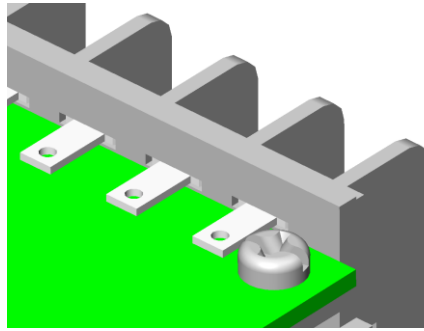
Plug-In version

It has leaf spring contact like card edge connectors, offers quick connections, ideal whenever replacement are important to reduce downtime.



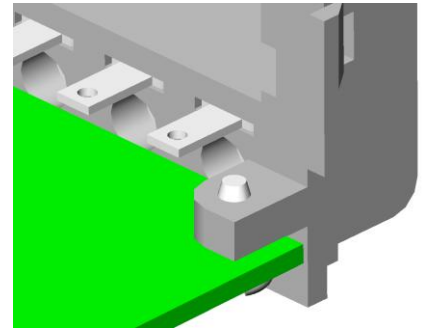
Surface Mount version

Solder tabs soldered directly on PCB surface, which eliminates wiring, cost effective for higher volumes.



Wire jumper version

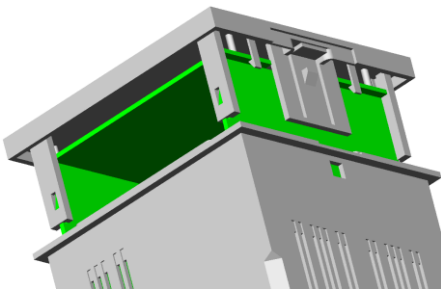
Wire jumper joins solder tab and PCB, terminal can be loaded in selected position for application configuration and to reduce cost with dummy terminal plugs.



Cassette features

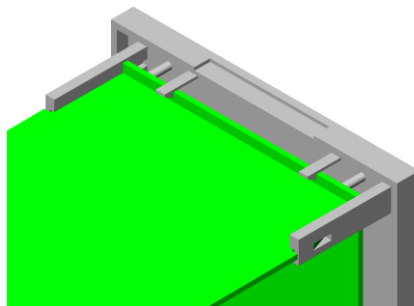
Snap-together Case Assembly

Assembly of case, front plate and back plate forms electronic module. Snap-together design of it speeds up the assembly time in manufacturing / servicing.



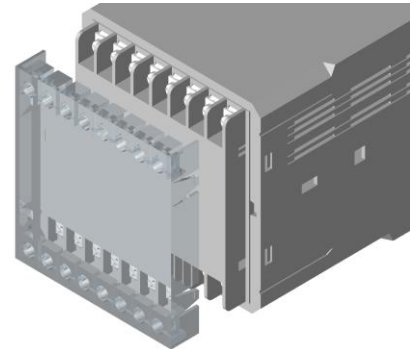
Snap-On latches for PCBs

Front Plate has Snap-On latches for two lengthwise and one display PCB. To avoid wiring PCBs can be interconnected.



Terminal cover

Transparent terminal cover snap fits on Back Plate `offers protection against accidental contact. IP20 (finger protected).



Ordering Information	
FIC-96-03	Complete Set with Wire Jumper Back Plate w/o Terminal cover & PCBs
FIC-96-04	Complete Set with Surface Mount Back Plate w/o Terminal cover & PCBs
FIC-96-05	Complete Set with Plug-In Back Plate w/o Terminal cover & PCBs
Case & ACCESSORIES (Loose Parts)	
FIC-96-01-	Case in Dark Gray / Black / White Color
FCL	Panel Mounting Clamps Pair
FFP-96-01	Front Plate Plain
FBP-96-01	Back Plate Wire Jumper Type
FBP-96-02	Back Plate Surface Mount Type
FBP-96-03	Back Plate Plug-In Type
FTC-96	Terminal Transparent Protection Cover
FTL	Terminal Lug and screw set for wire Jumper / Surface Mount
FPH-96-1	PCB Horizontal Long
FPH-96-2	PCB Horizontal Short
FBH-96-1	Bakelite Sheet Horizontal Long
FBH-96-2	Bakelite Sheet Horizontal Short
FPD-96	Display PCB
FPB-96	Back Plate PCB
FTP	Dummy terminal plugs

Detail Drawing

